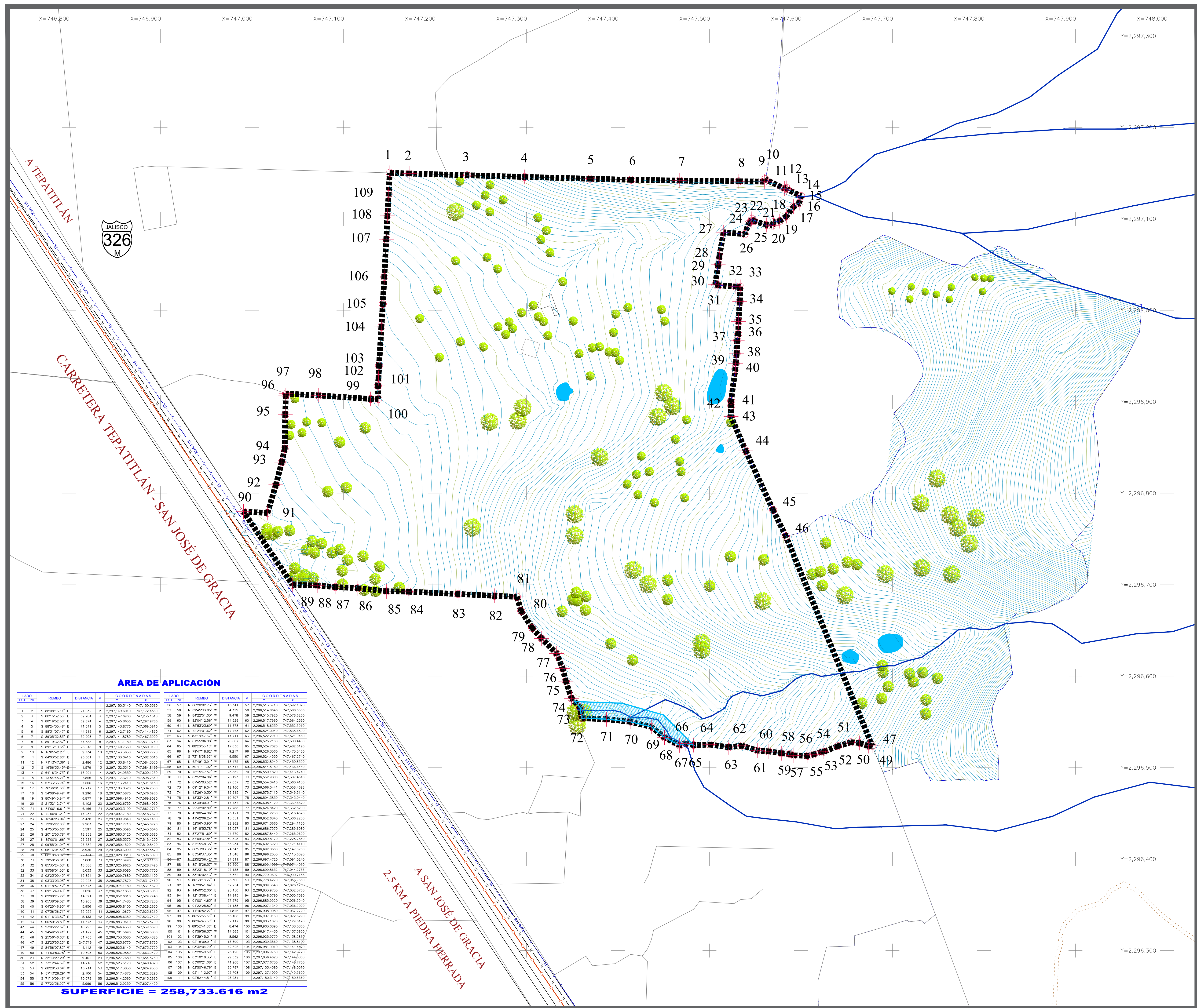


PLAN PARCIAL DE DESARROLLO URBANO

LOMAS ALTAS CAMPESTRE
Centro de Población
Tepatitlán de Morelos, Jal.

- SIMBOLOGIA:**
- ▬ Límites del Área de Aplicación.
 - Vértices del Área de Aplicación.
 - ▬ Área de Estudio.
 - ▬ Traza Urbana.
 - ▬ Limite Parcelas.
 - ⊕ Poblados, Fraccionamientos y/o Sitios de Referencia.
 - ▬ Carretera Estatal.
 - ▬ Caminos y Terracerías.
 - ▬ Escurremientos Intermitentes.
 - ▬ Curvas de Nivel.
 - ▬ Línea Eléctrica.
 - ▬ Telecomunicaciones Teléfono.
 - ▬ Telecomunicaciones Televisión Por Cable.
 - ▬ Transporte Foraneo
 - Arbolado



ÁREA DE APLICACIÓN

LADO	TEST	RUMBO	DISTANCIA	V	COORDENADAS	LADO	RUMBO	DISTANCIA	V	COORDENADAS
1	2	S 88°08'13.11" E	21.932	2	2,297,150.3140	56	S 77°23'36.92" E	5.999	56	2,296,512.9050
2	3	S 88°12'52.52" E	62.704	3	2,297,149.6510	57	S 88°20'02.73" E	15.341	57	2,296,513.3710
3	4	S 88°19'52.32" E	62.874	4	2,297,145.8650	58	N 69°43'55.85" W	4.215	58	2,296,514.2840
4	5	S 88°25'48.49" E	71.841	5	2,297,143.8170	59	N 69°25'12.56" W	9.428	59	2,296,515.7620
5	6	S 88°31'01.47" E	44.913	6	2,297,142.7160	60	N 82°04'12.56" W	14.526	60	2,296,517.7960
6	7	S 88°35'32.89" E	52.268	7	2,297,141.8780	61	N 82°03'22.61" W	11.478	61	2,296,519.6330
7	8	S 88°39'32.87" E	64.008	8	2,297,141.1180	62	N 72°24'01.62" W	17.763	62	2,296,524.0040
8	9	S 88°43'10.65" E	28.548	9	2,297,140.7360	63	S 87°18'47.52" W	14.711	63	2,296,522.2910
9	10	N 10°54'22.27" E	2.734	10	2,297,143.3820	64	S 88°25'55.15" W	17.636	64	2,296,524.7020
10	11	S 40°03'56.89" E	23.861	11	2,297,133.8410	65	N 79°18'18.56" W	9.217	65	2,296,526.3360
11	12	S 40°03'56.89" E	23.861	12	2,297,133.8410	66	S 79°18'58.52" W	6.550	66	2,296,524.4550
12	13	S 40°03'56.89" E	23.861	13	2,297,133.8410	67	N 67°41'13.51" W	18.475	67	2,296,532.8940
13	14	S 40°03'56.89" E	23.861	14	2,297,133.8410	68	N 52°11'11.42" W	18.347	68	2,296,544.5180
14	15	S 39°54'43.21" W	7.865	15	2,297,117.3210	69	N 70°15'47.57" W	23.852	69	2,296,558.1820
15	16	S 39°53'33.98" W	7.696	16	2,297,113.8410	70	N 87°52'04.06" W	26.153	70	2,296,562.8880
16	17	S 38°58'51.66" W	12.717	17	2,297,103.0320	71	N 87°45'03.52" W	27.037	71	2,296,568.0410
17	18	S 38°58'51.66" W	12.717	18	2,297,103.0320	72	N 87°32'19.04" W	12.160	72	2,296,568.0410
18	19	S 38°58'51.66" W	12.717	19	2,297,103.0320	73	N 87°32'19.04" W	12.160	73	2,296,568.0410
19	20	S 38°58'51.66" W	12.717	20	2,297,103.0320	74	N 87°32'19.04" W	12.160	74	2,296,568.0410
20	21	S 38°58'51.66" W	12.717	21	2,297,103.0320	75	N 87°32'19.04" W	12.160	75	2,296,568.0410
21	22	S 38°58'51.66" W	12.717	22	2,297,103.0320	76	N 87°32'19.04" W	12.160	76	2,296,568.0410
22	23	S 38°58'51.66" W	12.717	23	2,297,103.0320	77	N 87°32'19.04" W	12.160	77	2,296,568.0410
23	24	S 38°58'51.66" W	12.717	24	2,297,103.0320	78	N 87°32'19.04" W	12.160	78	2,296,568.0410
24	25	S 38°58'51.66" W	12.717	25	2,297,103.0320	79	N 87°32'19.04" W	12.160	79	2,296,568.0410
25	26	S 38°58'51.66" W	12.717	26	2,297,103.0320	80	N 87°32'19.04" W	12.160	80	2,296,568.0410
26	27	S 38°58'51.66" W	12.717	27	2,297,103.0320	81	N 87°32'19.04" W	12.160	81	2,296,568.0410
27	28	S 38°58'51.66" W	12.717	28	2,297,103.0320	82	N 87°32'19.04" W	12.160	82	2,296,568.0410
28	29	S 38°58'51.66" W	12.717	29	2,297,103.0320	83	N 87°32'19.04" W	12.160	83	2,296,568.0410
29	30	S 38°58'51.66" W	12.717	30	2,297,103.0320	84	N 87°32'19.04" W	12.160	84	2,296,568.0410
30	31	S 38°58'51.66" W	12.717	31	2,297,103.0320	85	N 87°32'19.04" W	12.160	85	2,296,568.0410
31	32	S 38°58'51.66" W	12.717	32	2,297,103.0320	86	N 87°32'19.04" W	12.160	86	2,296,568.0410
32	33	S 38°58'51.66" W	12.717	33	2,297,103.0320	87	N 87°32'19.04" W	12.160	87	2,296,568.0410
33	34	S 38°58'51.66" W	12.717	34	2,297,103.0320	88	N 87°32'19.04" W	12.160	88	2,296,568.0410
34	35	S 38°58'51.66" W	12.717	35	2,297,103.0320	89	N 87°32'19.04" W	12.160	89	2,296,568.0410
35	36	S 38°58'51.66" W	12.717	36	2,297,103.0320	90	N 87°32'19.04" W	12.160	90	2,296,568.0410
36	37	S 38°58'51.66" W	12.717	37	2,297,103.0320	91	N 87°32'19.04" W	12.160	91	2,296,568.0410
37	38	S 38°58'51.66" W	12.717	38	2,297,103.0320	92	N 87°32'19.04" W	12.160	92	2,296,568.0410
38	39	S 38°58'51.66" W	12.717	39	2,297,103.0320	93	N 87°32'19.04" W	12.160	93	2,296,568.0410
39	40	S 38°58'51.66" W	12.717	40	2,297,103.0320	94	N 87°32'19.04" W	12.160	94	2,296,568.0410
40	41	S 38°58'51.66" W	12.717	41	2,297,103.0320	95	N 87°32'19.04" W	12.160	95	2,296,568.0410
41	42	S 38°58'51.66" W	12.717	42	2,297,103.0320	96	N 87°32'19.04" W	12.160	96	2,296,568.0410
42	43	S 38°58'51.66" W	12.717	43	2,297,103.0320	97	N 87°32'19.04" W	12.160	97	2,296,568.0410
43	44	S 38°58'51.66" W	12.717	44	2,297,103.0320	98	N 87°32'19.04" W	12.160	98	2,296,568.0410
44	45	S 38°58'51.66" W	12.717	45	2,297,103.0320	99	N 87°32'19.04" W	12.160	99	2,296,568.0410
45	46	S 38°58'51.66" W	12.717	46	2,297,103.0320	100	N 87°32'19.04" W	12.160	100	2,296,568.0410
46	47	S 38°58'51.66" W	12.717	47	2,297,103.0320	101	N 87°32'19.04" W	12.160	101	2,296,568.0410
47	48	S 38°58'51.66" W	12.717	48	2,297,103.0320	102	N 87°32'19.04" W	12.160	102	2,296,568.0410
48	49	S 38°58'51.66" W	12.717	49	2,297,103.0320	103	N 87°32'19.04" W	12.160	103	2,296,568.0410
49	50	S 38°58'51.66" W	12.717	50	2,297,103.0320	104	N 87°32'19.04" W	12.160	104	2,296,568.0410
50	51	S 38°58'51.66" W	12.717	51	2,297,103.0320	105	N 87°32'19.04" W	12.160	105	2,296,568.0410
51	52	S 38°58'51.66" W	12.717	52	2,297,103.0320	106	N 87°32'19.04" W	12.160	106	2,296,568.0410
52	53	S 38°58'51.66" W	12.717	53	2,297,103.0320	107	N 87°32'19.04" W	12.160	107	2,296,568.0410
53	54	S 38°58'51.66" W	12.717	54	2,297,103.0320	108	N 87°32'19.04" W	12.160	108	2,296,568.0410
54	55	S 38°58'51.66" W	12.717	55	2,297,103.0320	109	N 87°32'19.04" W	12.160	109	2,296,568.0410
55	56	S 38°58'51.66" W	12.717	56	2,297,103.0320	110	N 87°32'19.04" W	12.160	110	2,296,568.0410
56	57	S 38°58'51.66" W	12.717	57	2,297,103.0320	111	N 87°32'19.04" W	12.160	111	2,296,568.0410
57	58	S 38°58'51.66" W	12.717	58	2,297,103.0320	112	N 87°32'19.04" W	12.160	112	2,296,568.0410
58	59	S 38°58'51.66" W	12.717	59	2,297,103.0320	113	N 87°32'19.04" W	12.160	113	2,296,568.0410
59	60	S 38°58'51.66" W	12.717	60	2,297,103.0320	114	N 87°32'19.04" W	12.160	114	2,296,568.0410
60	61	S 38°58'51.66" W	12.717	61	2,297,103.0320	115	N 87°32'19.04" W	12.160	115	2,296,568.0410
61	62	S 38°58'51.66" W	12.717	62	2,297,103.0320	116	N 87°32'19.04" W	12.160	116	2,296,568.0410
62	63	S 38°58'51.66" W	12.717	63	2,297,103.0320	117	N 87°32'19.04" W	12.160	117	2,296,568.0410
63	64	S 38°58'51.66" W	12.717	64	2,297,103.0320	118	N 87°32'19.04" W	12.160	118	2,296,568.0410
64	65	S 38°58'51.66" W	12.717	65	2,297,103.0320	119	N 87°32'19.04" W	12.160	119	2,296,568.0410
65	66	S 38°58'51.66" W	12.717	66	2,297,103.0320	120	N 87°32'19.04" W	12.160	120	2,296,568.0410
66	67	S 38°58'51.66" W	12.717	67	2,297,103.0320	121	N 87°32'19.04" W	12.160	121	2,296,568.0410
67	68	S 38°58'51.66" W	12.717	68	2,297,103.0320	122	N 87°32'19.04" W	12.160	122	2,296,568.0410
68	69	S 38°58'51.66" W	12.717	69	2,297,103.0320	123	N 87°32'19.04" W	12.160	123	2,296,568.0410
69	70	S 38°58'51.66" W	12.717	70	2,297,103.0320	124	N 87°32'19.04" W	12.160	124	2,296,568.0410
70	71	S 38°58'51.66" W	12.717	71	2,297,103.0320	125	N 87°32'19.04" W	12.160	125	2,296,568.0410
71	72	S 38°58'51.66" W	12.717	72	2,297,103.0320	126	N 87°32'19.04" W	12.160	126	2,296,568.0410
72	73	S 38°58'51.66" W	12.717	73	2,297,103.0320	127	N 87°32'19.04" W	12.160	127	2,296,568.0410
73	74	S 38°58'51.66" W	12.717	74	2,297,103.0320	128	N 87°32'19.04" W	12.160	128	2,296,568.0410
74	75	S 38°58'51.66" W	12.717	75	2,297,103.0320	129	N 87°32'19.04" W	12.160	129	2,296,568.0410
75	76	S 38°58'51.66" W	12.717	76	2,297,103.0320	130	N 87°32'19.04" W	12.160	130	2,296,568.0410
76	77	S 38°58'51.66" W	12.717	77	2,297,103.0320	131	N 87°32'19.04" W	12.160	131	2,296,568.0410
77	78	S 38°58'51.66" W	12.717	78	2,297,103.0320	132	N 87°32'19.04" W	12.160	132	2,296,568.0410
78										